

Office / Retail / Specialty Use For Lease

Prime Location:

224 Commerce Pl. Greensboro, NC



Features of Property:

+/- 2,000 sf
(rentable)

- First Floor subdivided into two (2) +/- 2k sf spaces with separate glass storefront entrances
- Incredible Natural light
- Customizable Open Layout
- Proximity to County and Federal Court Houses

For Lease: \$2,600 per month
(plus pro-rated utility cost)

Jeffrey Yetter, CCIM,

LEED AP

336-497-1444

515-C South Elm St
Greensboro, NC 27406

brokeryetter@gmail.com



Commercial Real Estate - Brokerage - Consulting - Development

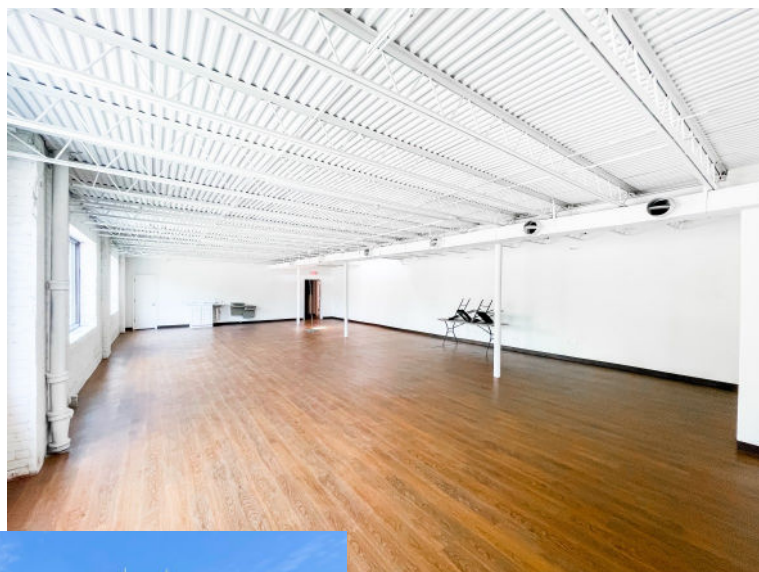
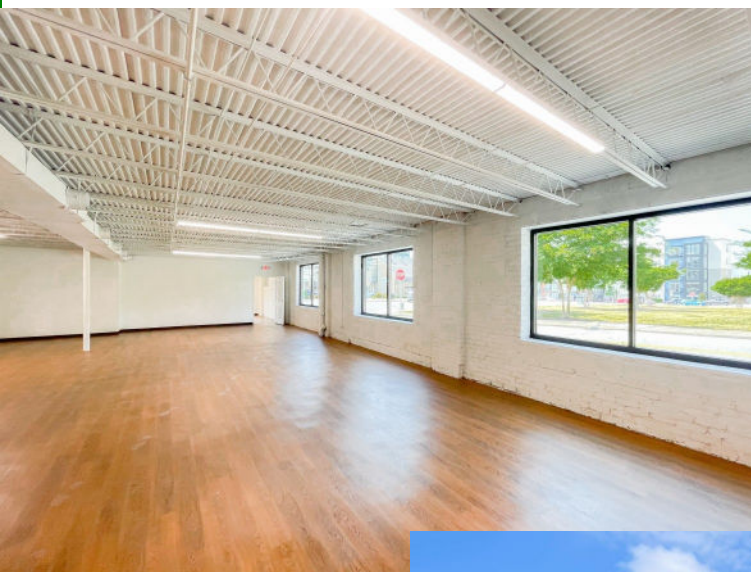
Information furnished regarding the aforementioned property was from sources deemed reliable. No warranties or guarantees are expressed or implied as to the accuracy thereof

Office / Retail / Specialty Use For Lease

Prime Location:

224 Commerce Pl. Greensboro, NC

First Floor: Subdivided into Two (2) +/- 2,000 sf spaces with new paint, LVT flooring, and lights
Each unit has a separate glass storefront entrance



Commercial Real Estate - Brokerage - Consulting - Development

Information furnished regarding the aforementioned property was from sources deemed reliable. No warranties or guarantees are expressed or implied as to the accuracy thereof

Office / Retail / Specialty Use For Lease

Prime Location:

224 Commerce Pl. Greensboro, NC



Commercial Real Estate - Brokerage - Consulting - Development