
Cone Health

Heart and Vascular Center

Art has had a long and impactful historical place for Cone Health and the Cone family. Cone Health values its positive impact on patients and staff because they know an environment that invests in the arts will be a meaningful space for everyone.

Cone Health is committed to establishing and investing in the Arts & Healing at Cone Health by focusing on harnessing art's beauty and emotional power to enhance the healing, waiting, and working environments throughout all of Cone Health's campuses.

HEART AND VASCULAR CENTER IN THE HEART OF MOSES CONE CAMPUS



Cone Health is working with HKS, an award-winning global architecture, interior design, planning, and advisory firm, to design a \$160 Million Heart and Vascular Center, which will be adjacent to the Parking Structure.

The Opportunity

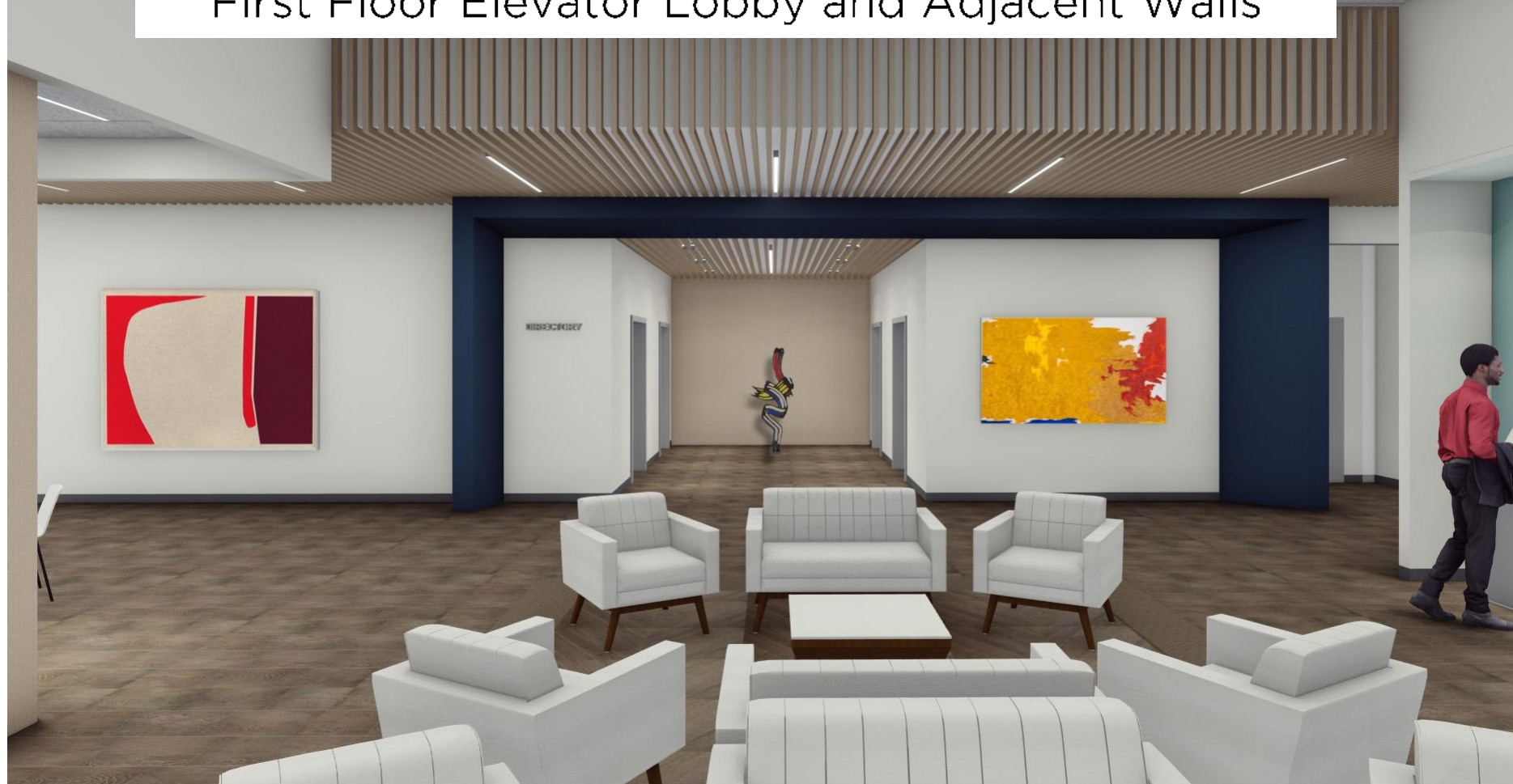
Cone Health seeks talented visual artists or artist teams to create original works of art within the new, state-of-the-art Heart and Vascular Center in Greensboro, North Carolina.

Artwork Placement

1. Elevator work (six works)
 2. Café Area (2-four-sided Pillars (up to eight works)
 3. Samet Signature Work (one work)
-
-

Art Activation Areas

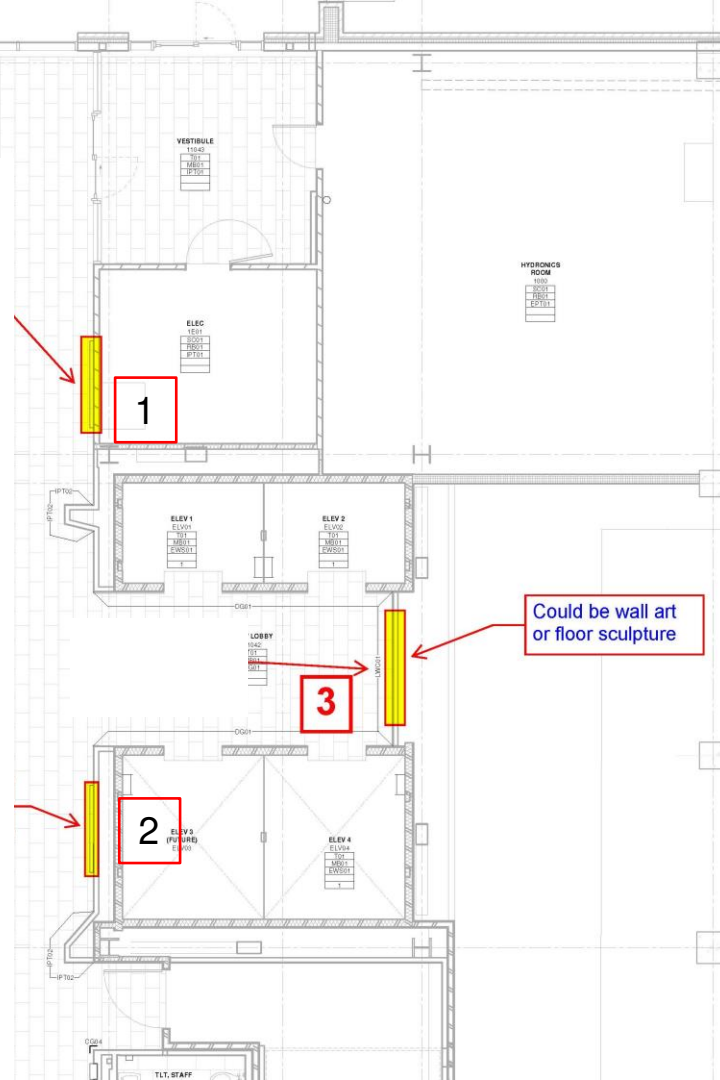
First Floor Elevator Lobby and Adjacent Walls



Elevator Works

First Floor:

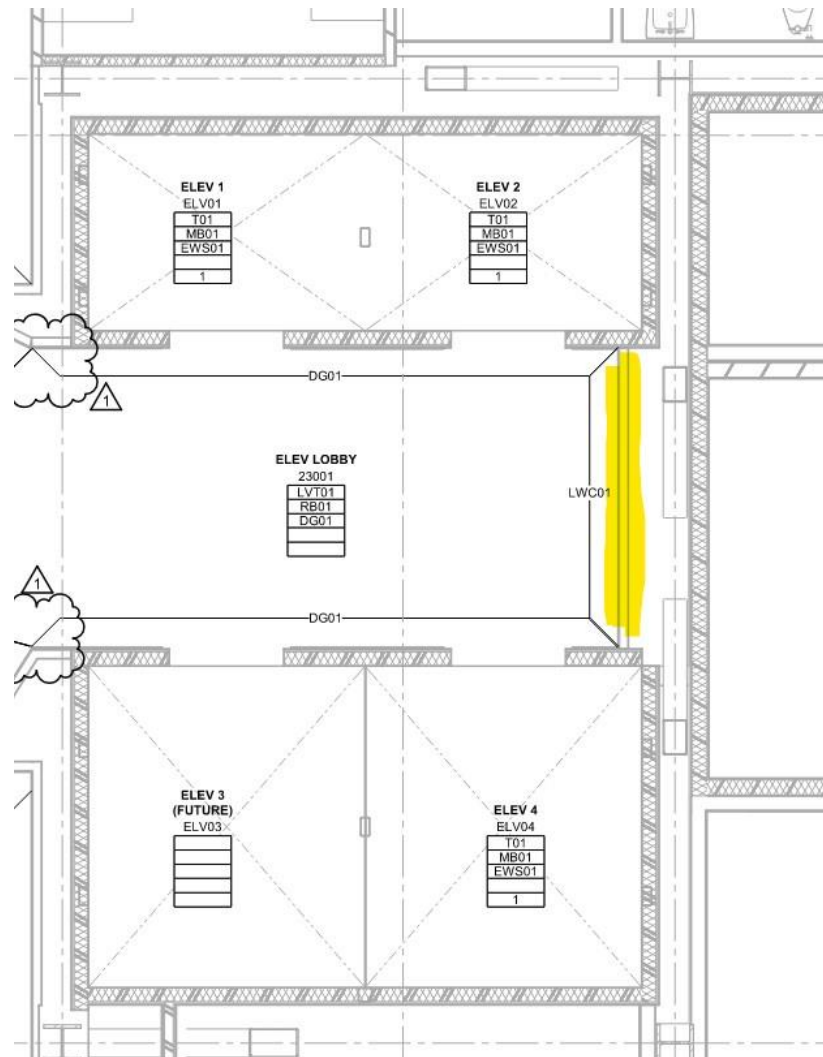
- Two Wall pieces adjacent to the elevator lobby: Maximum dimensions for artwork 6' tall by 7'-6" wide (see #1 + 2)
- Elevator lobby width is 10'-6" wide. Maximum dimensions for artwork is 7' tall by 7'-5" wide (see #3)

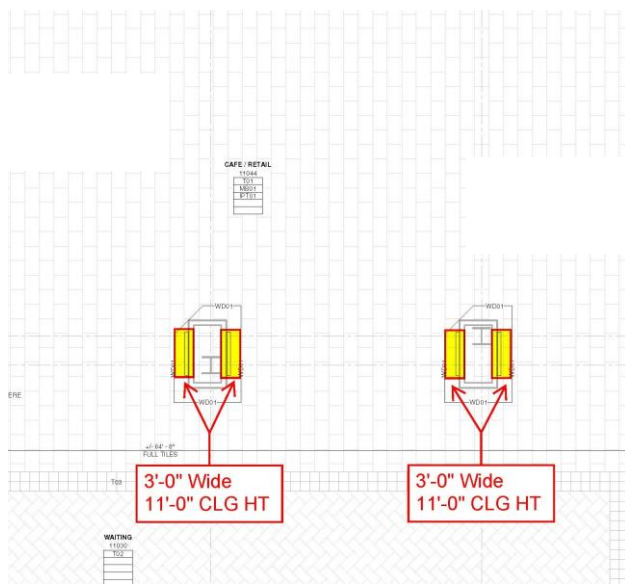


Second-fourth floor elevator lobbies:

Maximum dimensions
7' tall x 7'5" wide

Total Budget: \$32,000





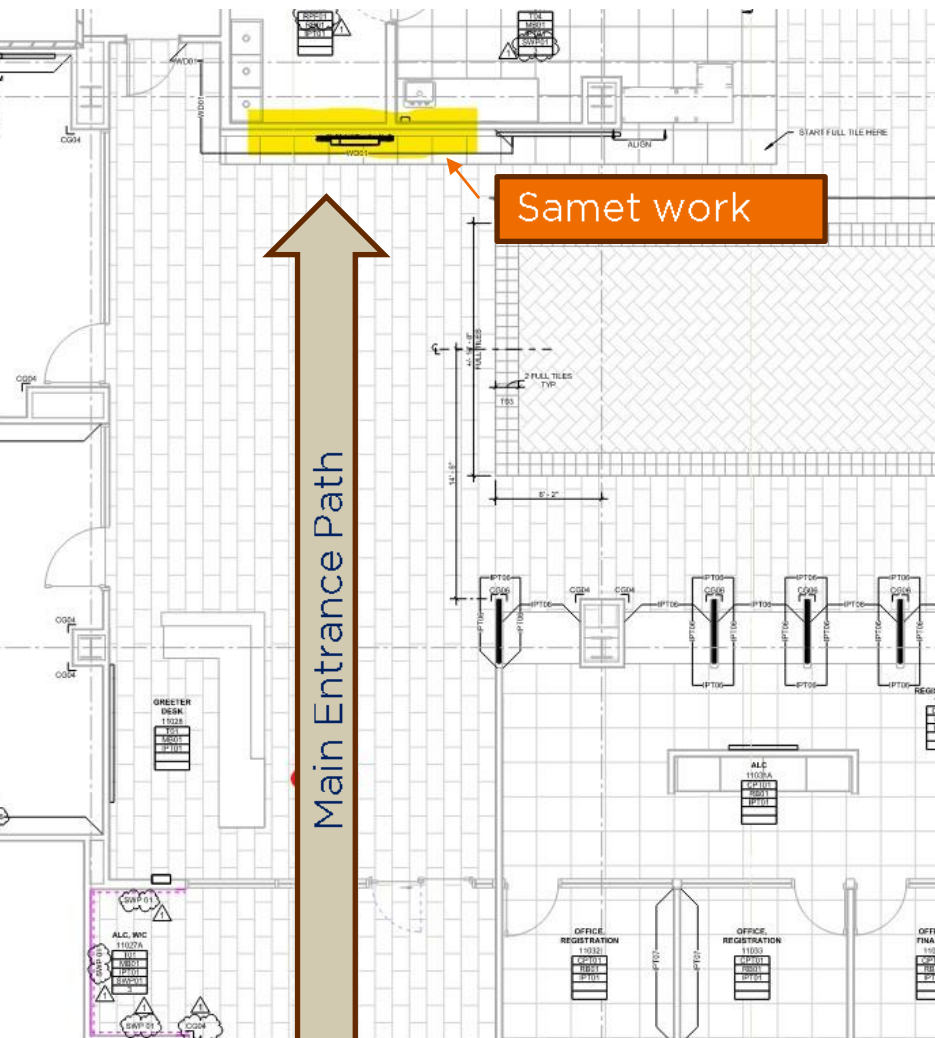
Two (2) Four-sided Pillars:
Maximum dimensions 3'-0" wide
by 11' tall

Total Budget: \$4,000





Samet Work



The ceiling height is 13'-6".
Wall area is 13'-6" tall by 16'-0" wide

Two-dimensional work will sit on a wall with a wood finish.

The maximum size of artwork is 9'-6" tall x 12' wide.

Total Budget: \$7,500

Frame Color & Accent Paints



Call for Artists and Timeline

**Artists can submit a letter of interest one or all
placement areas.**

Eligibility: Artist or team of artists must:

1. Reside in North Carolina
 2. Be able to work in the United States legally
 3. Embrace the Visioning Guidelines approved by the Steering Committee
-
-

Submission must include:

1. Statement of Interest
 2. Portfolio showcasing previous comparable work (within the stated budget parameters)
 3. Artist Statement and CV
 4. A statement explaining how the artist's work and process aligns with the visioning guidelines of the HVC
 5. Four letters of reference from previous commissioned or public art projects
-

Timeline

- March 1: Call for Artists Issued in North Carolina, South Carolina, and Georgia
 - May 1: Artist Letter of Interest submission deadline with representative work samples aligned with the budget allotted.
 - June 1: The Selection Committee selects the top two artists for each placemaking opportunity.
 - By August 1: Artists, architect, and art selection team meet with selected artists to finalize selected works
-

**Questions
contact Laura Way at
lway@theacgg.org**
